

Self-check Station

With Radio-Frequency Identification (RFID), the self-check station allows Library users to borrow and return library materials quickly and easily during library hours.

Book Drop

The 24/7 book drop is located at the lift lobby on the 11/F, Run Run Shaw Tower for Library users to return library materials outside library opening hours.

Photocopying, Printing and Scanning

A self-service colour printer and photocopier are available in the Library, which accept payment by Octopus Cards. A PC for Express Printing is located in the corner of Networked and Wireless Printing/Sign-In Station area.

Laptop / Tablet Loaning

Laptops and tablets are available for short-term loan while on campus. Details can be found on the HKUL Webpage.



<http://lib.hku.hk/techsupport/laptoploan.html>

Multimedia Listening and Viewing

The Multimedia Stations allow Library users to enjoy the diverse Multi-media Collection during library hours. The stations are equipped with DVD, Blu-ray, CD and cassette players, and TV monitors. Headphones are available at all stations. A turntable is also available upon request.

PC & Mac Workstations

Of the six workstations (3 PCs / 3 iMacs), five are installed with Sibelius music notation software and a midi keyboard. The remaining PC has a scanner and Adobe Photoshop software installed.

Wireless Environment

The Music Library has wireless hotspots that cover all seating areas. Library users can connect to the Web with their notebook computers and mobile devices.

Online Booking

Discussion rooms, computers and study tables can be booked online. The three discussion rooms are equipped with interactive whiteboards, projectors, and a TV panel for small group discussions and viewing. Laptops, midi keyboards, blu-ray players, and headphones can be checked out at the Information Counter for use inside the discussion rooms.



<http://lib.hku.hk/muslib/facilities.html>



Address:

11/F, Run Run Shaw Tower, Centennial Campus,
University of Hong Kong, Pokfulam Road, Hong Kong

Website:

<http://lib.hku.hk/muslib/>

E-mail:

muslib@hku.hk

Telephone:

(+852) 3917-2218

Facsimile:

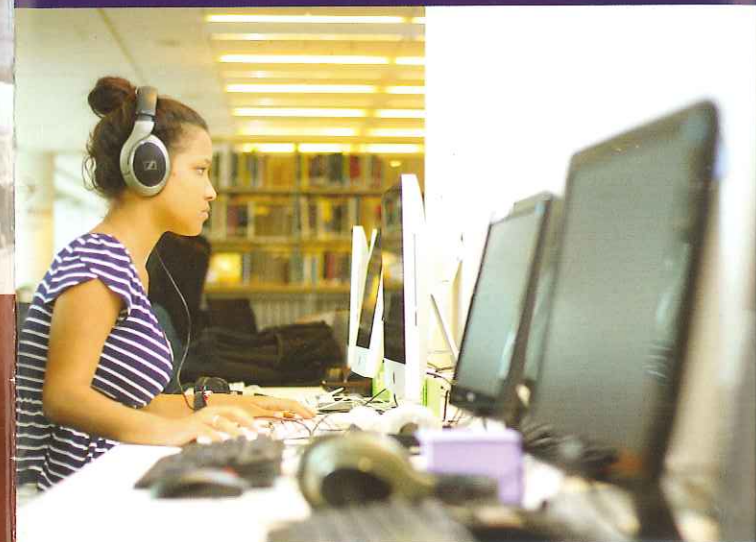
(+852) 2549-9653



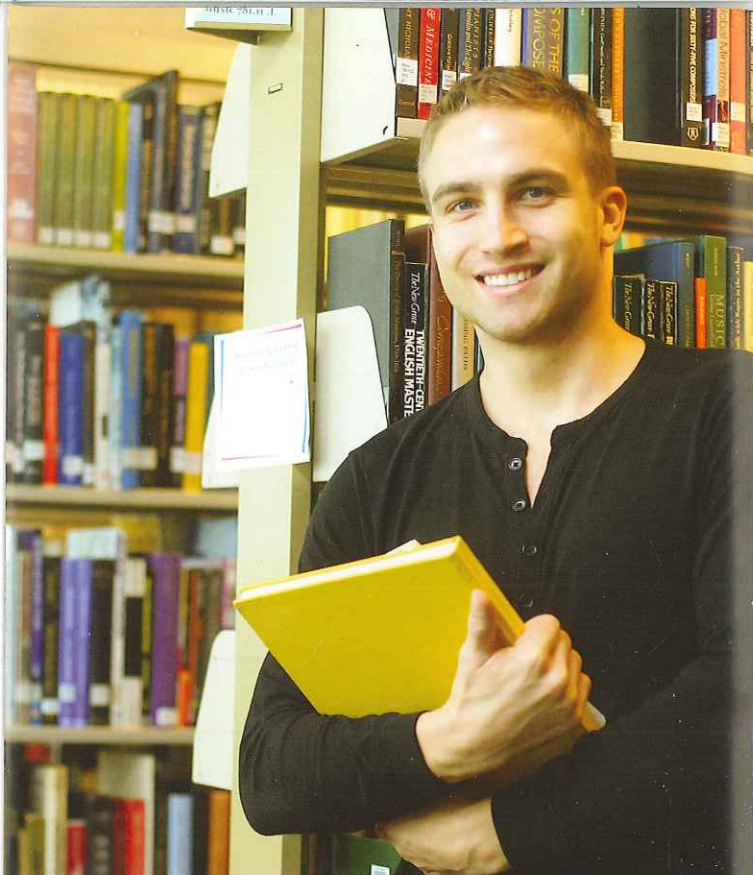
THE UNIVERSITY OF HONG KONG

MUSIC LIBRARY

香港大學音樂圖書館



The University of Hong Kong
Libraries



About the Library

Opened in 1982, the Music Library is one of the subject branch libraries of the University Libraries. It was originally housed in the Main Building and moved to the first floor of the Hung Hing Ying Building in 1996. Since August 2012, it has been located on the Centennial Campus, near the Department of Music and a roof-top garden. The Music Library is the primary repository of music materials at The University of Hong Kong. It provides research and teaching support for all aspects of music scholarship.

Library Collections

Books & Journals

Books & Journals support coursework in the HKU Department of Music, postgraduate studies and scholarly research in musicology, composition, music theory and ethnomusicology, as well as the musical interests of the University community.

Scores

Music scores cover a wide range of genres: solo & chamber music, operas, anthologies, and compositions for orchestra ranging from classical music to contemporary composers' works. Items are added on an ongoing basis.

Multimedia Materials

A collection of CDs, DVDs, and BDs ranging from classical music, Canto-pop music, and world music are available to Library users. Materials in obsolete formats including LPs and audio/video cassettes are available upon request.

Electronic Resources

A wide range of electronic resources cover core full-text article databases, e-dictionaries & encyclopedias, e-books, and e-journals. Audio & video resources contain collections of classical music, jazz, opera, and Asian music. These are also available through the campus network.

Reference Materials

These materials include Western and East Asian music dictionaries, encyclopedias, and bibliographies guides. Reference scores feature facsimile editions and composers' complete works. Reference materials are for library use only.

Reserve Collection

The collection consists of books, journal articles, scores, multimedia materials, and teacher-owned materials. These materials are for short-term loan.

Classification Systems

The Dewey Decimal Classification system is used for Western music materials. The Library of Congress Classification is used for East Asian music materials.

Facilities & Services

Information Services

Library staff on duty at the Information Counter will help answer general questions about the use of the Library. Enquiries may be made to the Music Librarian or Library staff by phone, fax or email.



<http://lib.hku.hk/mainlib/reference/index.html>

Orientation and Training

Library orientation programmes are organised for new students. Other library courses are scheduled for undergraduate and postgraduate students upon request.

Research Consultation

The Research Consultation Service is a personal research consultation service offered by the Music Librarian. The Librarian advises Library users on how to effectively gather research material pertaining to their research projects. A music guide will also help you locate relevant resources quickly.



<http://libguides.lib.hku.hk/music>

Circulation

Library users with a valid Library borrower's card are entitled to borrow materials from the Music Library. Loan period of each item varies, depending on the material type as well as the Library users' borrowing privileges. Library staff on duty at the Information Counter can help advise on loan periods. For details on borrowing privileges, online renewals, online requests, overdue fines, PIN for self-services, please refer to the HKUL Webpage.



<http://lib.hku.hk/general/services.html>

